

## Two convenient map update options are included with your active subscription:

### 1) USB Download: Full Map Update. (Install guide is available on the webstore)

Includes entire region (North America for example) - downloaded to a USB flash drive.  
Map is downloaded via the webstore

### 2) Wi-Fi Update: Home Region or Select Region Update – see instructions below:

- Includes a smaller coverage area that can be updated through a Wi-Fi connection — no USB is required.
  - a. Home Region: Local Region
  - b. Select Region: Select an area other than your Home region

#### To get started on a Wi-Fi update:

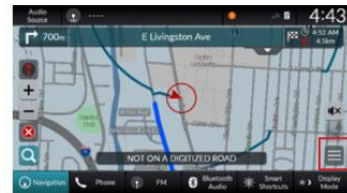
- a) You must first enable 'Online Services':

1. Connect your vehicle's navigation system to **Wi-Fi**
  - a) Press the **Home** button
  - b) Select **General Settings** → **Connections** → **Wi-Fi**
  - c) Choose a Wi-Fi network and enter the password, then select **Connect**

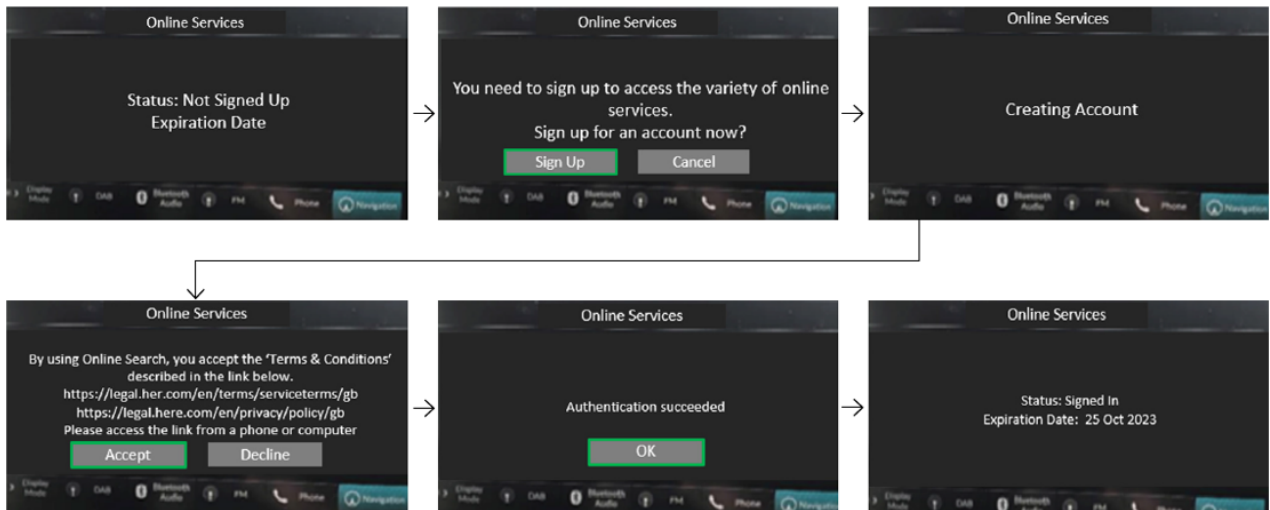
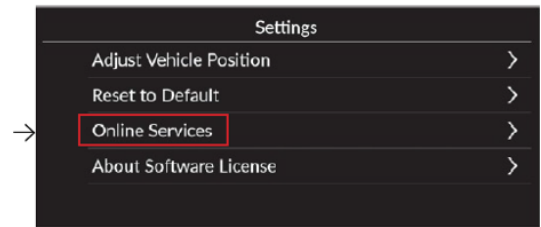


This is the only symbol that indicates Wi-Fi connection.

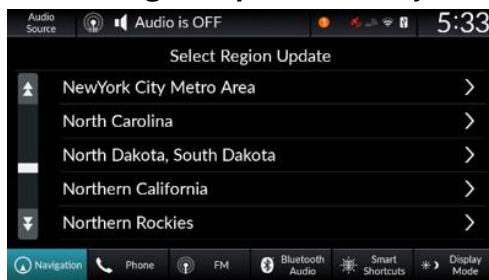
2. Press **Navigation**. Press the Menu Icon (square icon with 3 lines)



3. In the Menu screen, scroll down to Settings
4. Select **Online Services** → **Online Service Status**
  - a) If Status says Signed In — then you can move to STEP 2 of this guide
  - b) If Status says Not Signed up — go back to previous screen, select Sign Up for Online Services and follow the prompts on screen



- b) Once you have Signed in, on your system screen go to 'Navigation,' then Map Update
- c) Select either:
  - **Home Region Update:** The system will automatically select the area closest to you
  - **Select Region Update:** The system will give you a list of regions to choose from



- d) The system will confirm if you want to start the Wi-Fi map update
- e) It will then ask you to confirm the region, the version and the data size
  - a. The database that is available should match the database available for download on the webstore
- f) The system will first Download the map, then it will Update to the system (these steps can be completed at different times). The screen will confirm completion



\*Los Angeles is just for example

